



224 WEST ESPLANADE

NORTH VANCOUVER, BC

FOR LEASE

OFFICES WITH VIEWS - Up to 7,294 square feet of office space.



Suite 201, 1460 Main Street
North Vancouver, BC V7J 1C8
Phone: 604.980.3003
Fax 604.484.2203
info@formanpilkington.com
*Personal Real Estate Corporation

ROSS FORMAN, PREC*
604.980.3003, 2
ross@formanpilkington.com

JEFF PILKINGTON, PREC*
604.980.3003, 1
jeff@formanpilkington.com

WWW.FORMANPILKINGTON.COM

224 WEST ESPLANADE, NORTH VANCOUVER

FOR LEASE - OFFICE WITH VIEWS - Up to 10,427 square feet of office space.

LOCATION

Located in the heart of the Esplanade corridor. Steps away from shops, cafes, restaurants and movie theatre. One block away from the Lonsdale Quay Market and Hotel, Bus Loop and Seabus Terminal to downtown Vancouver.

FEATURES

- Recently renovated common areas
- Great building signage opportunity
- Fibre optics available
- Protected and unobstructed views of the inlet and downtown Vancouver
- 1 parking stall per 500 square feet rented space at \$140 per month

NET ASKING RATE

\$22.50 per square foot, per annum.

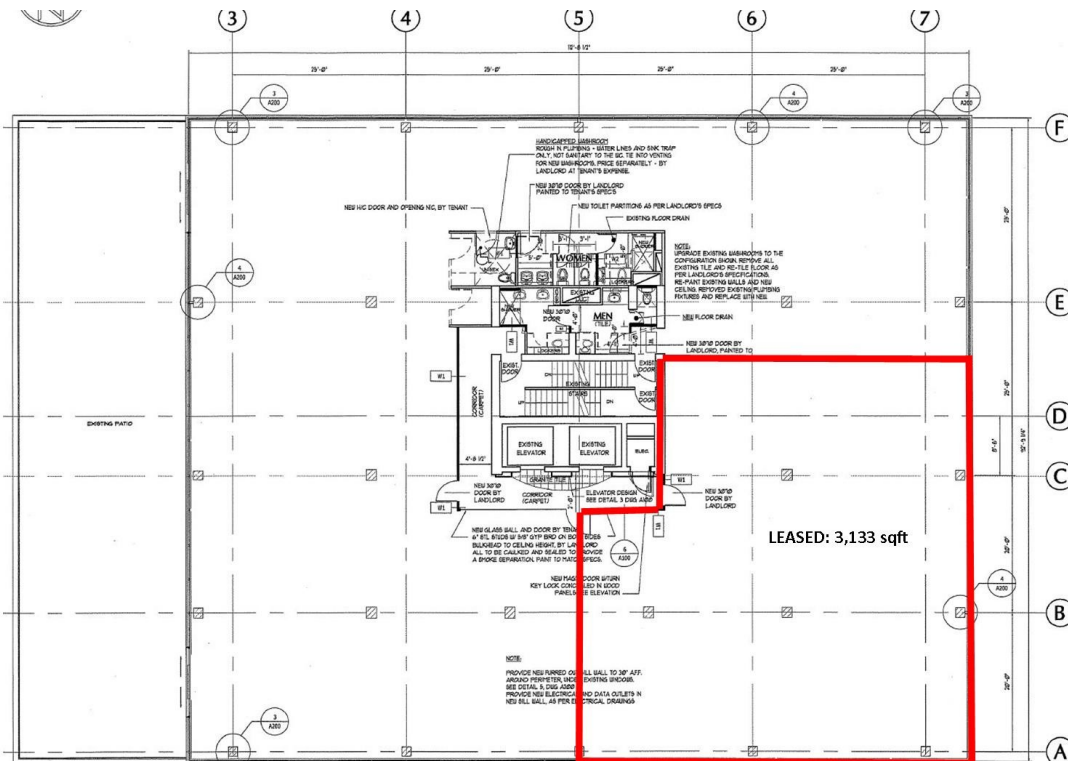
OPERATING COSTS AND TAXES

\$15.69 per square foot. (Estimated for 2017)

SIZE

Fourth Floor - 7,294 square feet

May be demised into minimum 2,000 square feet.



ROSS FORMAN, PREC*

604.980.3003, 2

ross@formanpilkington.com

JEFF PILKINGTON, PREC*

604.980.3003, 1

jeff@formanpilkington.com

WWW.FORMANPILKINGTON.COM



224 WEST ESPLANADE, NORTH VANCOUVER

FOR LEASE - OFFICE WITH VIEWS - Up to 10,427 square feet of office space.



ROSS FORMAN, PREC*
604.980.3003, 2
ross@formanpilkington.com

JEFF PILKINGTON, PREC*
604.980.3003, 1
jeff@formanpilkington.com

WWW.FORMANPILKINGTON.COM

