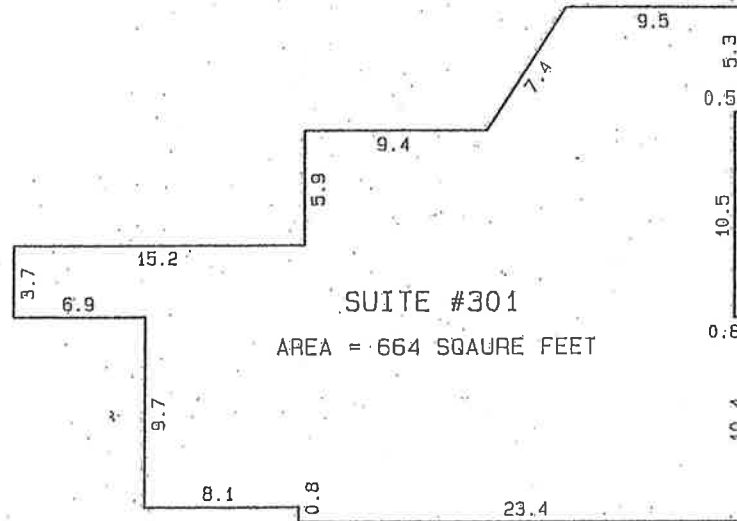
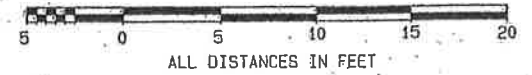


SKETCH OF LEASE AREA ON A PORTION OF THE THIRD FLOOR OF A BUILDING LOCATED AT #126 EAST 15TH STREET, NORTH VANCOUVER, B.C.

SUITE #301 - 126 E. 15TH STREET

SCALE 1/8 INCH = 1 FOOT



BENNETT & ASSOCIATES  
B.C. LAND SURVEYORS  
#201 - 275 FELL AVENUE  
NORTH VANCOUVER, B.C.  
V7P 2M4

PH. 980-4868  
FX. 980-5856

FILE # \J2\12121.301 FB.301/P.22-270.

DIMENSIONS SHOWN ARE TO B.O.M.A. STANDARDS

CERTIFIED CORRECT

THIS 12<sup>TH</sup> DAY OF FEBRUARY, 1998.

*Richard J. Goff*  
B.C.L.S.